



Advanced Screening Technology

“ABS” BANANA SCREENS

AURY Banana screens have been developed and designed to operate efficiently in very demanding coal and minerals processing environments and applications.

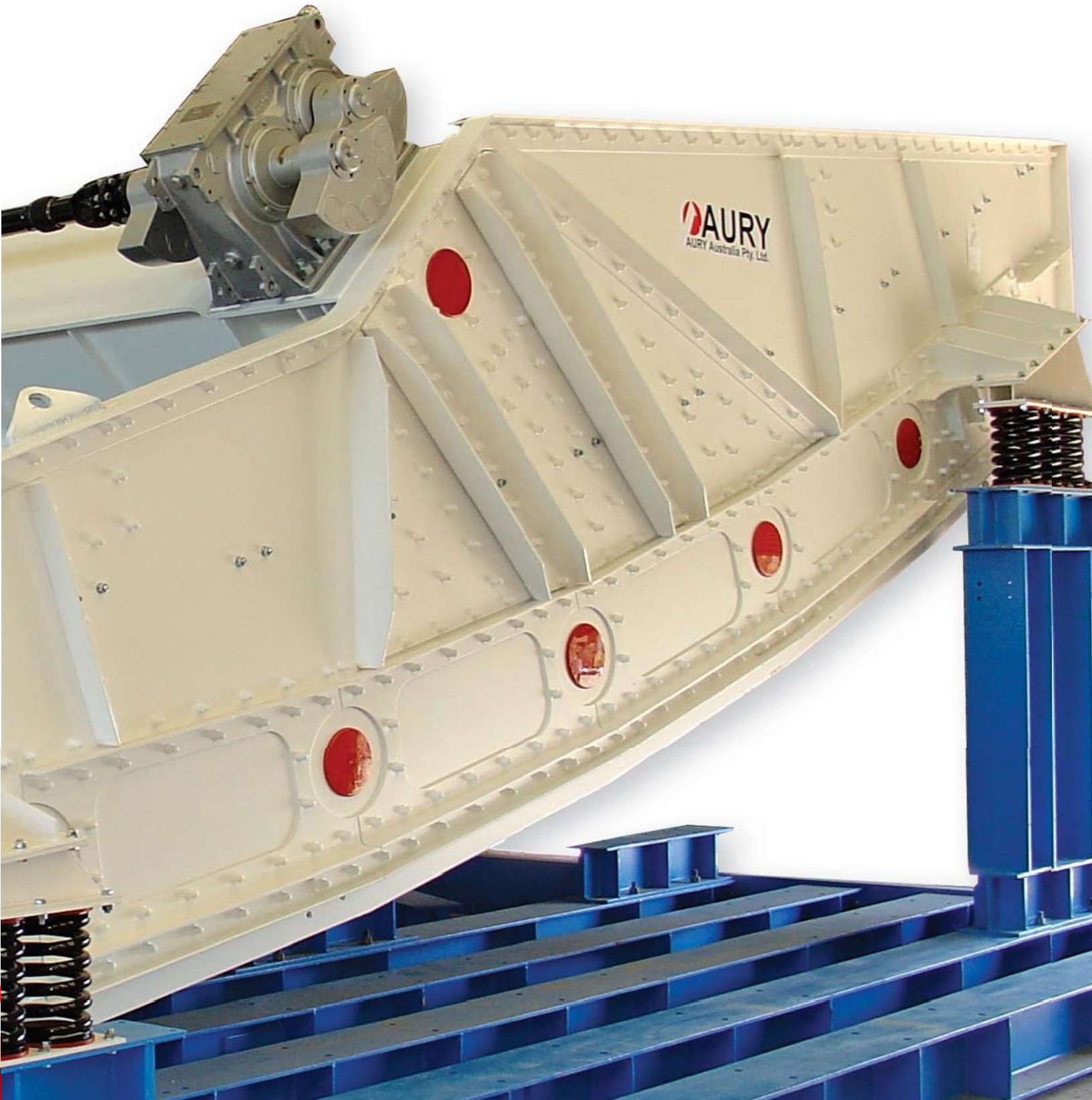
- Full range of efficient reliable Banana screens for all screening applications
- Single and double deck models available
- Screen mounting supports can be altered to suit most existing screen footprints
- Screen mounting angle can be designed to suit specific screening applications
- Screen deck transition angles can be engineered to suit specific applications and material characteristics.

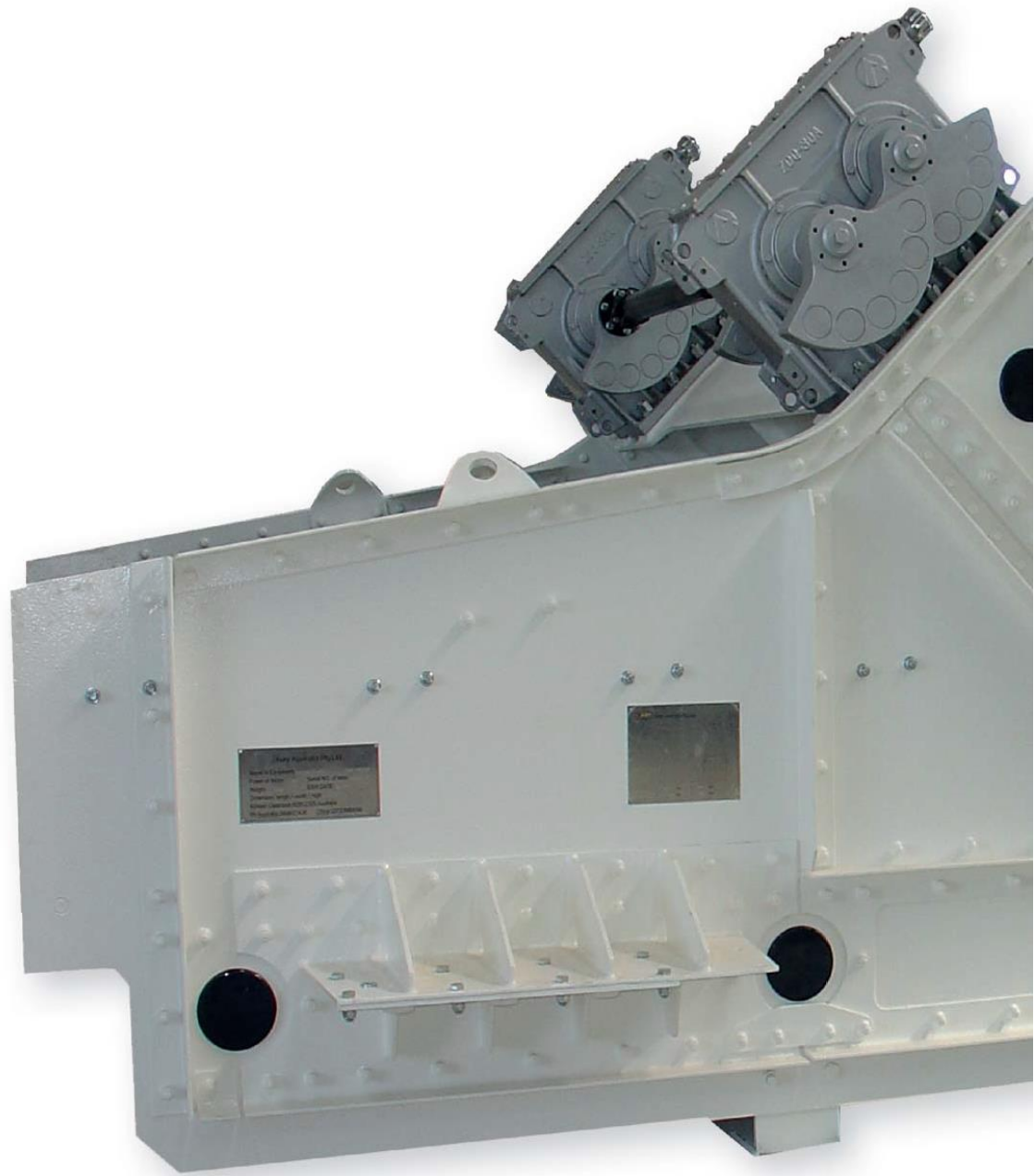


“ABS” BANANA SCREEN MODELS

AURY Banana Screens are available in single and double deck configurations and can be fitted with any modular deck systems.

The screens size ranges from 1.2 meters (4 ft) to 4.9 meters (16 ft) wide and 2.4 meters (8 ft) to 9.5 meters (31 ft) in length (Dimensions refer to the actual useable screening deck area).



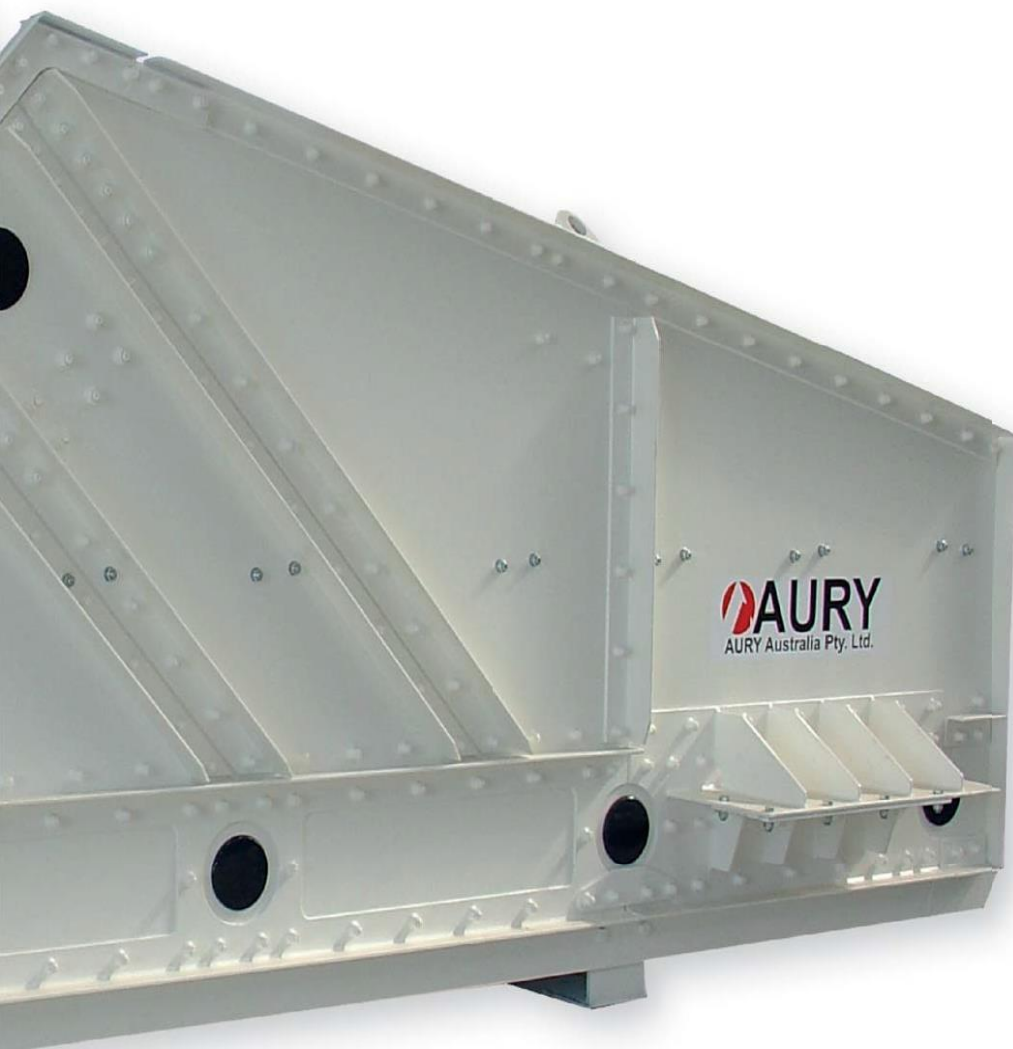


“AHS” HORIZONTAL SCREENS

The Aury horizontal screens have been developed and designed to operate efficiently in very demanding coal and minerals processing environments and applications.

Aury Horizontal Screens Features:

- Full range of efficient reliable horizontal screens for all screening applications
- Single and double deck models available
- Screen mounting supports can be altered to suit most existing screen footprints
- Screen mounting angle can be designed to suit specific screening applications



“AHS” HORIZONTAL SCREEN MODELS

The Aury AHS horizontal screen models are available in single and double deck configurations and can be fitted with any of the existing modular deck systems.

The screens size ranges from 1.2 meters to 4.9 meters wide and 2.4 meters to 9.5 meters in length of total screening deck area.

“AHF” HIGH FREQUENCY SCREENS

Aury High Frequency Dewatering Screens utilize twin vibrating motor technology to efficiently dewater a wide range of fine particles.

The screen sizes vary from our Model AHF-1230 (1200mm wide x 3000mm long usable deck area) up to the Aury AHF-2448 Screen (2400mm wide x 4800mm long). Our screens feature specially designed tubular cross beam and cleat arrangement, sprayed with two layers of polyurethane to prevent abrasion and corrosion, ensuring long screen life.



AURY SCREEN TECHNOLOGY

- AURY screens are designed to be exceptionally structurally sound and extensively tested and tuned to eliminate stress induced cracking.
- AURY screens are manufactured in-house in our own ISO9000 certified manufacturing facilities.
- Side plates are weldless and assembled using Huck bolts to ensure minimal stress on the structure. Exciter beams are box beam construction designed using FEA software and design tested using strain gauges to ensure trouble free operation over many years.
- Exciter beams are constructed using automated “Submerged Arc” welding technology, and all welds are “Full Penetration”.
- Exciter beams are bolted using high tensile bolts and locking nuts.
- Heavy duty bearings by internationally recognized brands are used on the exciter for extended service life.
- Exciter castings are machined and inspected in house on high precision CNC machining centers. Almost all exciter components are manufactured and machined in house to exacting standards.
- All exciters are test run for 24 hours while bearing temperatures are constantly monitored to ensure reliable long operational life.
- All fabricated steelwork is constructed from high grade and quality certified steel materials. AURY screen cross beams feature innovative and proven designs, consisting of tubular steel beams with full penetration welded flanges. Deck support fixing is via a cast steel saddle, which is machined and then Huck bolted to precisely and solidly mate to the cross beam.
- All exciter and cross beams are heat treated to eliminate stresses induced by welding.
- Assembled cross beams are abrasively blasted to SA class 2.5 and then sprayed with two coats (6 mm total thickness) of high-quality polyurethane to provide both corrosion and abrasion resistance for the life of the cross beam.
- All cross beams and exciter beams are machined to the precise length to ensure a solid and rugged final screen assembly.
- All screen stiffeners and bracing are primed before fitting and sealed using polyurethane sealer to provide high quality corrosion protection.
- All screen fabricated components are abrasively blasted to “bare metal” class 2.5 and then painted with a 2-part epoxy primer to 50 µm DFT and high build 2 pack finish coat minimum 150 µm to a final total minimum DFT of 200µm, providing exceptional corrosion protection.



AURY Australia Pty Ltd

RUTHERFORD, NSW
Ph: +61 7 4952 2622

MACKAY, QLD
Ph: +61 2 4937 6935

CANNINGVALE, SA
Ph: +61 402 525 010

Email: sales@auryaustralia.com.au
Website: www.auryaustralia.com.au

AURY Africa Mozambique Lda

CHINGODZI, TETE
Ph: +258 25 220 724

Email: info.sa@dadieng.com
Website: www.auryaustralia.com.au

AURY Africa Pty Ltd

JET PARK, BOKSBURG
Ph: +27 11 026 6642

DADI (Australia) Engineering Company Pty Ltd

SYDNEY, NSW
Ph: +61 2 9357 7800

Email: info.au@dadieng.com
Website: www.dadieng.com.au

DADI Engineering USA, Inc.

WOODS CROSS, UT
Ph: +1 801 588 9483

Email: info.us@dadieng.com
Website: www.dadieng.com.au